

# FTS-105-S/TM

## 6U RACK MOUNT

## SPLICE & TERM ENCLOSURE



FIELD READY - FACTORY DIRECT

A Division of Century-Tywood Manufacturing Co., Inc.

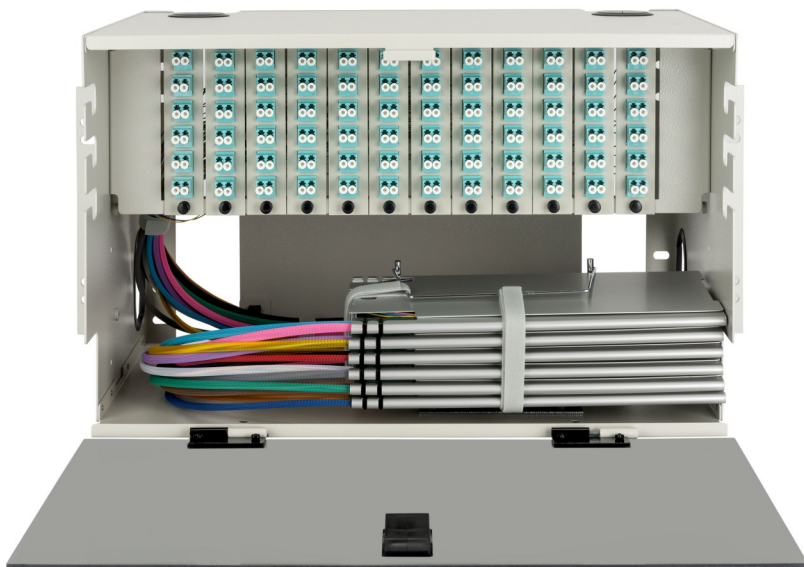
79 Lowland Street • Holliston MA, 01746

T: 508.429.2342 • F: 508.429.5693

[sales@centuryfiberoptics.com](mailto:sales@centuryfiberoptics.com)

[www.centuryfiberoptics.com](http://www.centuryfiberoptics.com)

Material	Finish	Dimension	Weight (empty)
16 GA CRS	Dove Grey or Black	10.5"H x 17"W x 12"D	19lbs



### SPLICE & TERM (S/TM)

Version	Max Adapter Plates	Max Splice Trays	Splice Tray Size
Splice and Term (S/TM)	12	6*	10" or 10" 0.5" Deep
*0.5" deep tray maximum is half that of the standard 10" tray			

All adapter plates, pigtails, splice trays and other accessories are sold separately